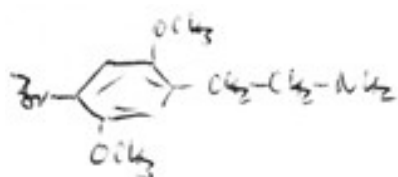


Colin Marsh  
12/27/76



7 mg

time course: after 30 min first effects

"	1h	100% for ~ 3-4h
"	6h	~ 20-30%
"	7h	~ 0

units: +1 (1 1/2)

Enhancement of mostly tactile, less  
acoustical or visual perception

visual: only light + shadow, no colors,  
however ~30% of Mescaline effect.  
in "line - shape - movements".

tactile: the body is more divided in warm +  
cold zones; body sensations are enhanced;  
the resonance in the skeleton (skelett) is the  
same like with all other substances.

A lot of inner trembling (uncertainty) by  
touching something.

In comparison to MDMA / (a homogeneous drug)  
4 Br-2C is less balanced, some properties are  
more balanced, whereas other effects are  
missing. The window effect is not with both legs,  
you stand with our (visual!) still before the window  
(normal appetite + taste)