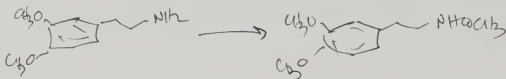


138



- 1.8 g amine (sat \bar{c} carbamate, out of the bottle \bar{c} a pipette) into
- 3 g pyridine - add
- 1.2 g Ac₂O (1.02 theo)

quite warm, wait until it cools, into ~ 50 ml H₂O
 acidify \bar{c} conc HCl - xht \bar{c} CH₂Cl₂ (2 x 50 ml)
 pool ~~extract~~ \bar{c} sat NaHCO₃ - wash -
 wash clear - wash \bar{c} H₂O -
 shake,

flesh CH₂Cl₂ (acid washed, base washed
 H₂O washed)

↳ 1.72 g pale yellow oil -
 GCMS samples

138A

add 1.7g polyphosphoric acid.

- Δ 80 - 1/2 hr.
- + 3 ml H₂O - 1/2 hr more.
- xht \bar{c} 2 x 50 ml CH₂Cl₂

I have forgotten what I did. CH₂Cl₂ into base?
 - as basis, into CH₂Cl₂?

flesh CH₂Cl₂ → 1.41 g brown oil (138B)
 NaOEt.