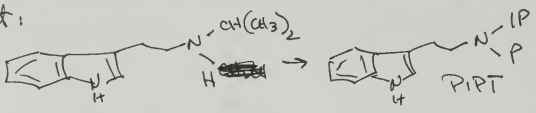


106 (Attempt 1)

MW NIPT 202  
PrI 170  
~NIPT 129



decrease-  
x  $\frac{202}{238}$

0.50 g NIPT into 5 ml sulfone -  $\Delta$  SB to dissolve -  
 wait - forgot it was the hydrochloride -  
 add 0.8 g 6N NaOH - then  
 1.3 g  $\text{IP}$  (x2)  
 3.4 g (should be 1.7 for (x2) but some PrI was -  
 PrI got ~~chewed~~ chewed up to the xS OH

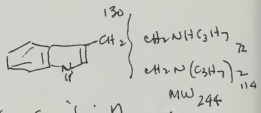
Onto SB noon - off 5:30 PM - strip  $\rightarrow$  black residue -  
 add 100 ml H<sub>2</sub>O - second error - it should have been  
 MeOH - add 50 ml MeOH as well - now it is kinda  
 in solution. kbt 3x 30 ml hexane - flash

black oil 106A  
0.14  
transfer, 0.10

130° haze no weight. OUT -  
0.05 mm

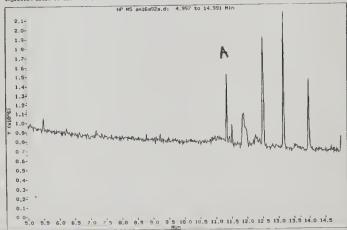
150-160° (questamate)  
0.05 mm Hg

0.01 g - one droplet - save sample  
for GCMS of  
PIPT-106



GCMS - it is there ~~is~~  
sensitivity of MS as full

Data File: sphenewal\_12015\_01061022.d  
Injection Date: 09-02-10 13:52



A92A

