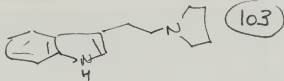




Ictacth I  
Sulfolane RT.



103

1.6g Tryptamine base with 20 g sulfolane  $\Delta$  a bit to dissolve

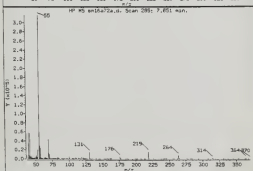
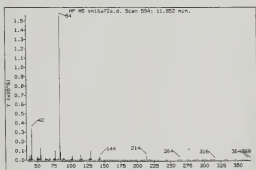
3.6g Ictacth I (10% xs)

2.8g  $\sim$

Stir RT - 15 hr work up - there is a 2-phase character to it all - into 100 ml THO (is basic) and xht  $\bar{c}$  30 ml hexane. (these are globs not soluble in either phase). Strip hexane  $\rightarrow$  0.25 g sticky white

into ether for distil - strip down

$\rightarrow$  0.08 g - distil  $\rightarrow$  trace product



36.3 = 100% 64

2.6 7% 130

1.1 3% 214

Data File: spm002112018.D

Injection Date: 18-09-06 16:21

