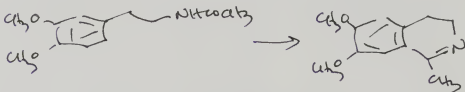


(144) repeat of page 140

See spectra p. 142



2.46 g amide (4.14) (all xbtline) add 100 ml
 10 g POCl_3 - onto SA. 1 hr. Killed with water too soon (too hot) & lost a pile of it onto the lab bench

1.16.

wash acidic ag. in CH_2Cl_2 , OH $\bar{}$ = 25% NaOH - xbt $\bar{}$
 2 x 50 ml CH_2Cl_2 - flush \rightarrow 1.16 g residue that is a fine tan solid.

save a smell (144) for CMS (144A)

Test 1.08 g \uparrow into water pH to ~4 & HCl - NaBH_4 as smell boluses. - add HCl as needed to keep pH acidic \sim 7.5 - eventually at 0.6 g BH_4^- - This should be another aqueous xbt - acid as such - wash \bar{c} 2 x 25 ml HCl .

add NaBH_4 spoon by spoon - HCl as needed to keep acidic.

after ~ gram or two of NaBH_4 - aqueous sb. acidic.

$\xleftarrow{\text{xht } \text{CH}_2\text{Cl}_2}$
 ex. acetic acid

yellow CH_2Cl_2
 0.06 g oil -
 here is all the amber color

~~make basic~~
 white wash of NaOH
 $\xrightarrow{\text{xht } \text{CH}_2\text{Cl}_2}$ n colorless xbt CH_2Cl_2

0.9 x oil - almost

colorless - distill

144B

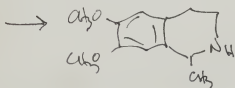
@ 0.15 mm

130 - 145 \rightarrow white oil

0.94 in flask xbt

0.84 dug out in freshy reviews, dash.

to page 142



0.15 mm
 130-145
 140